

THE
PEAK
(PUNCAK TEBRAU)
JOHOR BAHRU
INTERNATIONAL CITY





Nikmati pemandangan menakjubkan di Selat Singapura dan Pusat Bandar JB dari The Peak (Puncak Tebrau) mercu tanda terbaru Johor Bahru. Pilihan 2-bilik tidur dan 4-bilik tidur direka bentuk di mana setiap unit adalah unit tepi dan mempunyai butiran seni dan kemasan yang berkualiti. Bilik tidur utama dan bilik mandi sangat harmoni dan selesa. Semua unit menampilkan tingkap yang tinggi tiga meter, membolehkan ruang tamu anda disinari dengan cahaya matahari semula jadi.



● JOHOR BAHRU INTERNATIONAL CITY

 PASAR RAYA BESAR

- 1 Giant, Plentong
- 2 Tesco, KSL City
- 3 Cold Storage, Plaza Pelangi
- 4 Giant Leisure Mall
- 5 AEON Big
- 6 Tesco Extra, Tebrau City
- 7 Pandan City

 PADANG GOLF

- 1 Ponderosa Golf & Country Club
- 2 Permas Jaya Golf Club
- 3 Starhill Golf & Country Club
- 4 Royal Johor Golf & Country Club
- 5 Daiman 18 Golf Club
- 6 Impian Emas Golf Club

 PAKAR PERUBATAN

- 1 Sultanah Aminah Hospital (GH)
 - 2 Sultan Ismail Hospital
 - 3 Johor Specialist
 - 4 Puteri Specialist
 - 5 Hospital Penawar Pandan City
- 16 km City of Knowledge Bandar Seri Alam
 22 km University Technology Malaysia
 23 km Educity Nusajaya
 24 km Johor Premium Outlet
 24 km Senai International Airport

 INSTITUT PENDIDIKAN

- 1 English College
- 2 SETA
- 3 Convent
- 4 SIGS
- 5 Foon Yew High School
- 6 St Joseph
- 7 Austin Heights Private & International School
- 8 Fair View International School
- 9 Hilltop Private School
- 10 REAL School
- 11 REAL Kids
- 12 Sunway College
- 13 SMK Majidi Baru 2

 PUSAT MEMBELI-BELAH

- 1 Plaza Pelangi
- 2 Holiday Plaza
- 3 KSL City Mall
- 4 Komtar JBCC
- 5 City Square
- 6 Mid Valley Southkey Megamall
- 7 IKEA
- 8 AEON Tebrau City
- 9 Pelangi Leisure Mall
- 10 The Store Sentosa
- 11 Capital City
- 12 Plaza Angsana
- 13 Proposed 5 Star Hotel and Shopping Mall



MATRIX RAJAH

	BLOKA		BLOKB				BLOKC		BLOKD		BLOKE				BLOKF								
	UTARA	SELATAN	UTARA	SELATAN		UTARA	SELATAN	UTARA	SELATAN	UTARA	SELATAN	UTARA	SELATAN	UTARA	SELATAN								
39	D2 A-39-1	D3 A-39-2				A B-39-2A	B1 B-39-2B	E C-39-1	E1 C-39-2	D4 D-39-1	D1 D-39-2	A E-39-1A	B1A E-39-1B	A E-39-2A	B1A E-39-2B	E F-39-1	E F-39-2	39					
38	D7 A-38-1	D6 A-38-2	A B-38-1A	B2 B-38-1B	A B-38-2A	B2 B-38-2B		E C-38-1	E1 C-38-2	D8 D-38-1	D5 D-38-2	A E-38-1A	B2A E-38-1B	A E-38-2A	B2A E-38-2B	E F-38-1	E F-38-2	38					
37	D2 A-37-1	D3 A-37-2	A B-37-1A	B1 B-37-1B	A B-37-2A	B1 B-37-2B		E C-37-1	E1 C-37-2	D4 D-37-1	D1 D-37-2	A E-37-1A	B1 E-37-1B	A E-37-2A	B1 E-37-2B	E F-37-1	E F-37-2	37					
36	D2 A-36-1	D3 A-36-2	A B-36-1A	B2 B-36-1B	A B-36-2A	B2 B-36-2B		E C-36-1	E1 C-36-2	D4 D-36-1	D1 D-36-2	A E-36-1A	B2A E-36-1B	A E-36-2A	B2A E-36-2B	E F-36-1	E F-36-2	36					
35	D2 A-35-1	D3 A-35-2	A B-35-1A	B1 B-35-1B	A B-35-2A	B1 B-35-2B		E C-35-1	E1 C-35-2	D4 D-35-1	D1 D-35-2	A E-35-1A	B1A E-35-1B	A E-35-2A	B1A E-35-2B	E F-35-1	E F-35-2	35					
33A	D7 A-33A-1	D6 A-33A-2	A B-33A-1A	B2 B-33A-1B	A B-33A-2A	B2 B-33A-2B		E C-33A-1	E1 C-33A-2	D8 D-33A-1	D5 D-33A-2	A E-33A-1A	B2A E-33A-1B	A E-33A-2A	B2A E-33A-2B	E F-33A-1	E F-33A-2	33A					
33	D2 A-33-1	D3 A-33-2	A B-33-1A	B1 B-33-1B	A B-33-2A	B1 B-33-2B		E C-33-1	E1 C-33-2	D4 D-33-1	D1 D-33-2	A E-33-1A	B1A E-33-1B	A E-33-2A	B1A E-33-2B	E F-33-1	E F-33-2	33					
32	D2 A-32-1	D3 A-32-2	A B-32-1A	B2 B-32-1B	A B-32-2A	B2 B-32-2B		E C-32-1	E1 C-32-2	D4 D-32-1	D1 D-32-2	A E-32-1A	B2A E-32-1B	A E-32-2A	B2A E-32-2B	E F-32-1	E F-32-2	32					
31	D2 A-31-1	D3 A-31-2	A B-31-1A	B1 B-31-1B	A B-31-2A	B1 B-31-2B		E C-31-1	E1 C-31-2	D4 D-31-1	D1 D-31-2	A E-31-1A	B1A E-31-1B	A E-31-2A	B1A E-31-2B	E F-31-1	E F-31-2	31					
30	D7 A-30-1	D6 A-30-2	A B-30-1A	B2 B-30-1B	A B-30-2A	B2 B-30-2B		E C-30-1	E1 C-30-2	D8 D-30-1	D5 D-30-2	A E-30-1A	B2A E-30-1B	A E-30-2A	B2A E-30-2B	E F-30-1	E F-30-2	30					
29	D2 A-29-1	D3 A-29-2	A B-29-1A	B1 B-29-1B	A B-29-2A	B1 B-29-2B		E C-29-1	E1 C-29-2	D4 D-29-1	D1 D-29-2	A E-29-1A	B1A E-29-1B	A E-29-2A	B1A E-29-2B	E F-29-1	E F-29-2	29					
28	D2 A-28-1	D3 A-28-2	A B-28-1A	B2 B-28-1B	A B-28-2A	B2 B-28-2B		E C-28-1	E1 C-28-2	D4 D-28-1	D1 D-28-2	A E-28-1A	B2A E-28-1B	A E-28-2A	B2 E-28-2B	E F-28-1	E F-28-2	28					
27	D2 A-27-1	D3 A-27-2	A B-27-1A	B1 B-27-1B	A B-27-2A	B1 B-27-2B		E C-27-1	D3 C-27-2	D4 D-27-1	D1 D-27-2	A E-27-1A	B1A E-27-1B	A E-27-2A	B1A E-27-2B	E F-27-1	E F-27-2	27					
26	D7 A-26-1	D6 A-26-2	A B-26-1A	B2 B-26-1B	A B-26-2A	B2 B-26-2B		E C-26-1	E1 C-26-2	D8 D-26-1	D5 D-26-2	A E-26-1A	B2A E-26-1B	A E-26-2A	B2 E-26-2B	A F-26-1A	B1A F-26-1B	A F-26-2A	B1 F-26-2B	26			
25	D2 A-25-1	D3 A-25-2	A B-25-1A	B1 B-25-1B	A B-25-2A	B1 B-25-2B		E C-25-1	E1 C-25-2	D4 D-25-1	D1 D-25-2	A E-25-1A	B1A E-25-1B	A E-25-2A	B1A E-25-2B	A F-25-1A	B1 F-25-1B	A F-25-2A	B1 F-25-2B	25			
23A	D2 A-23A-1	D3 A-23A-2	A B-23A-1A	B2 B-23A-1B	A B-23A-2A	B2 B-23A-2B		A C-23A-1A	B1 C-23A-1B	A C-23A-2A	B1 C-23A-2B	A E-23A-1A	B2A E-23A-1B	A E-23A-2A	B2 E-23A-2B	A F-23A-1A	B1 F-23A-1B	A F-23A-2A	B1 F-23A-2B	23A			
23	D2 A-23-1	D3 A-23-2	A B-23-1A	B1 B-23-1B	A B-23-2A	B1 B-23-2B		A C-22-1A	B1 C-22-1B	A C-22-2A	B1 C-22-2B	A E-23-1A	B1A E-23-1B	-	-	A F-23-1A	B1 F-23-1B	-	-	23			
22	D7 A-22-1	D6 A-22-2	A B-22-1A	B2 B-22-1B	A B-22-2A	B2 B-22-2B		A C-22-1A	B1 C-22-1B	A C-22-2A	B1 C-22-2B	A E-22-1A	B2A E-22-1B	-	-	A F-22-1A	B1 F-22-1B	-	-	22			
21	-	-	A A-21-2A	B1 A-21-2B	-	-	A B-21-2A	B1 B-21-2B	-	-	A C-21-2A	B1 C-21-2B	A E-21-1A	B1A E-21-1B	A E-21-2A	B1A E-21-2B	A F-21-1A	B1 F-21-1B	A F-21-2A	B1 F-21-2B	21		
20	-	-	A A-20-2A	B1 A-20-2B	-	-	A B-20-2A	B2 B-20-2B	-	-	A C-20-2A	B1 C-20-2B	A E-20-1A	B2A E-20-1B	A E-20-2A	B2 E-20-2B	A F-20-1A	B1 F-20-1B	A F-20-2A	B1 F-20-2B	20		
19	A A-19-1A	B1 A-19-1B	A A-19-2A	B1 A-19-2B	A A-19-3A	B1 A-19-3B	A B-19-1A	B1 B-19-1B	A B-19-2A	B1 B-19-2B	A C-19-1A	B1 C-19-1B	A C-19-2A	B1 C-19-2B	A E-19-1A	B1A E-19-1B	A E-19-2A	B1A E-19-2B	A F-19-1A	B1 F-19-1B	A F-19-2A	B1 F-19-2B	19
18	A A-18-1A	B1 A-18-1B	A A-18-2A	B1 A-18-2B	A A-18-3A	B1 A-18-3B	A B-18-1A	B2 B-18-1B	A B-18-2A	B2 B-18-2B	A C-18-1A	B1 C-18-1B	A C-18-2A	B1 C-18-2B	A E-18-1A	B2A E-18-1B	A E-18-2A	B2 E-18-2B	A F-18-1A	B1 F-18-1B	A F-18-2A	B1 F-18-2B	18
17	A A-17-1A	B1 A-17-1B	A A-17-2A	B1 A-17-2B	A A-17-3A	B1 A-17-3B	A B-17-1A	B2 B-17-1B	A B-17-2A	B1 B-17-2B	A C-17-1A	B1 C-17-1B	A C-17-2A	B1 C-17-2B	A E-17-1A	B1A E-17-1B	A E-17-2A	B1 E-17-2B	A F-17-1A	B1 F-17-1B	A F-17-2A	B1 F-17-2B	17
16	A A-16-1A	B1 A-16-1B	A A-16-2A	B1 A-16-2B	A A-16-3A	B1 A-16-3B	A B-16-1A	B2 B-16-1B	A B-16-2A	B2 B-16-2B	A C-16-1A	B1 C-16-1B	A C-16-2A	B1 C-16-2B	A E-16-1A	B2A E-16-1B	A E-16-2A	B2 E-16-2B	A F-16-1A	B1 F-16-1B	A F-16-2A	B1 F-16-2B	16
15	A A-15-1A	B1 A-15-1B	A A-15-2A	B1 A-15-2B	A A-15-3A	B1 A-15-3B	A B-15-1A	B1 B-15-1B	A B-15-2A	B1 B-15-2B	A C-15-1A	B1 C-15-1B	A C-15-2A	B1 C-15-2B	A E-15-1A	B1 E-15-1B	A E-15-2A	B1 E-15-2B	A F-15-1A	B1 F-15-1B	A F-15-2A	B1 F-15-2B	15
13A	A A-13A-1A	B1 A-13A-1B	A A-13A-2A	B1 A-13A-2B	A A-13A-3A	B1 A-13A-3B	A B-13A-1A	B2 B-13A-1B	A B-13A-2A	B2 B-13A-2B	A C-13A-1A	B1 C-13A-1B	A C-13A-2A	B1 C-13A-2B	A E-13A-1A	B2A E-13A-1B	A E-13A-2A	B2 E-13A-2B	A F-13A-1A	B1 F-13A-1B	A F-13A-2A	B1 F-13A-2B	13A
13	A A-13-1A	B1 A-13-1B	A A-13-2A	B1 A-13-2B	A A-13-3A	B1 A-13-3B	A B-13-1A	B1 B-13-1B	A B-13-2A	B1 B-13-2B	A C-13-1A	B1 C-13-1B	A C-13-2A	B1 C-13-2B	A E-13-1A	B1 E-13-1B	A E-13-2A	B1 E-13-2B	A F-13-1A	B1 F-13-1B	A F-13-2A	B1 F-13-2B	13
12	A A-12-1A	B1 A-12-1B	A A-12-2A	B1 A-12-2B	A A-12-3A	B1 A-12-3B	A B-12-1A	B2 B-12-1B	A B-12-2A	B2 B-12-2B	A C-12-1A	B1 C-12-1B	A C-12-2A	B1 C-12-2B	A E-12-1A	B2A E-12-1B	A E-12-2A	B2 E-12-2B	A F-12-1A	B1 F-12-1B	A F-12-2A	B1 F-12-2B	12
11	A A-11-1A	B1 A-11-1B	A A-11-2A	B1 A-11-2B	A A-11-3A	B1 A-11-3B	A B-11-1A	B1 B-11-1B	A B-11-2A	B1 B-11-2B	A C-11-1A	B1 C-11-1B	A C-11-2A	B1 C-11-2B	A E-11-1A	B1 E-11-1B	A E-11-2A	B1 E-11-2B	A F-11-1A	B1 F-11-1B	A F-11-2A	B1 F-11-2B	11
10	A A-10-1A	B1 A-10-1B	A A-10-2A	B1 A-10-2B	A A-10-3A	B1 A-10-3B	A B-10-1A	B2 B-10-1B	A B-10-2A	B2 B-10-2B	A C-10-1A	B1 C-10-1B	A C-10-2A	B1 C-10-2B	A E-10-1A	B2A E-10-1B	A E-10-2A	B2 E-10-2B	A F-10-1A	B1 F-10-1B	A F-10-2A	B1 F-10-2B	10
9	A A-09-1A	B1 A-09-1B	A A-09-2A	B1 A-09-2B	A A-09-3A	B1 A-09-3B	A B-09-1A	B2 B-09-1B	A B-09-2A	B1 B-09-2B	A C-09-1A	B1 C-09-1B	A C-09-2A	B1 C-09-2B	A E-09-1A	B1 E-09-1B	A E-09-2A	B1 E-09-2B	A F-09-1A	B1 F-09-1B	A F-09-2A	B1 F-09-2B	9
8	A A-08-1A	B1 A-08-1B	A A-08-2A	B1 A-08-2B	A A-08-3A	B1 A-08-3B	A B-08-1A	B2 B-08-1B	A B-08-2A	B2 B-08-2B	A C-08-1A	B1 C-08-1B	A C-08-2A	B1 C-08-2B	A E-08-1A	B2A E-08-1B	A E-08-2A	B2 E-08-2B	A F-08-1A	B1 F-08-1B	A F-08-2A	B1 F-08-2B	8
7	A A-07-1A	B1 A-07-1B	A A-07-2A	B1 A-07-2B	A A-07-3A	B1 A-07-3B	A B-07-1A	B1 B-07-1B	A B-07-2A	B1 B-07-2B	A C-07-1A	B1 C-07-1B	A C-07-2A	B1 C-07-2B	A E-07-1A	B1 E-07-1B	A E-07-2A	B1 E-07-2B	A F-07-1A	B1 F-07-1B	A F-07-2A	B1 F-07-2B	7
6	-	-	A A-06-2A	B1 A-06-2B	-	-	A B-06-2A	B2 B-06-2B	-	-	A C-06-2A	B1 C-06-2B	-	-	A E-06-1A	B2 E-06-1B	-	-	A F-06-1A	B1 F-06-1B	-	-	6
5	-	-	A A-05-2A	B1 A-05-2B	-	-	A B-05-2A	B1 B-05-2B	-	-	A C-05-2A	B1 C-05-2B	-	-	-	-	-	-	-	-	-	-	5
Lantai 3A	-	-	A A-03A-2A	B1 A-03A-2B	-	-	A B-03A-2A	B2 B-03A-2B	-	-	A C-03A-2A	B1 C-03A-2B	-	-	-	-	-	-	-	-	-	-	Lantai 3A

Menara 1

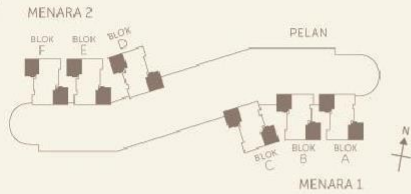
Menara 2

PELAN LANTAI

THE PEAK (PUNCAK TEBRAU)

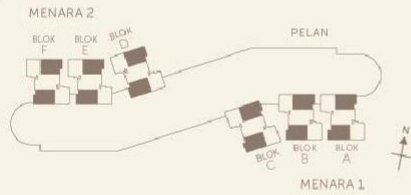
MENARA 1 & 2

JENIS A



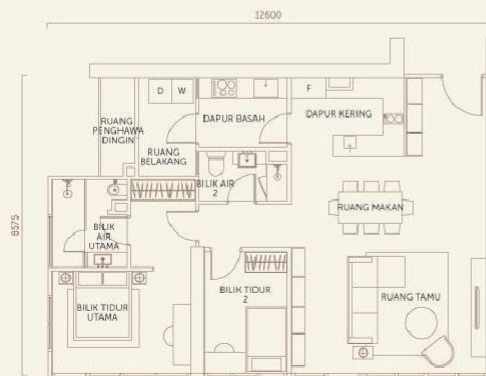
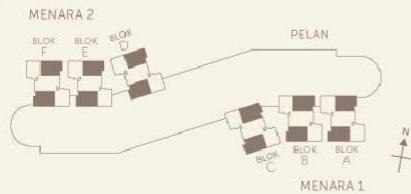
JENIS B1

1130 sqft



JENIS B1a

1130 sqft



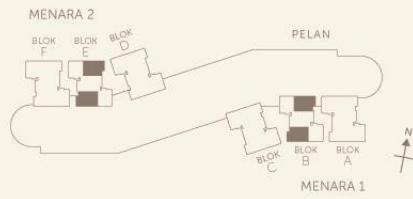
PELAN LANTAI

THE PEAK (PUNCAK TEBRAU)

MENARA 1 & 2

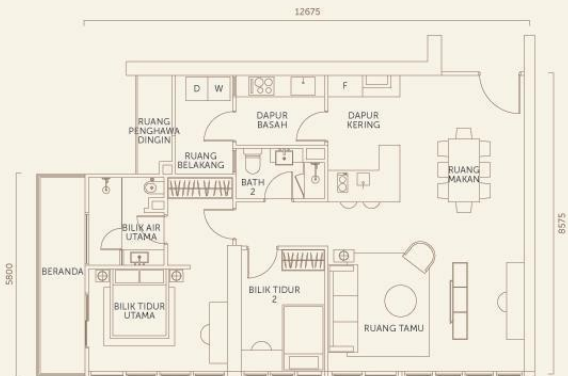
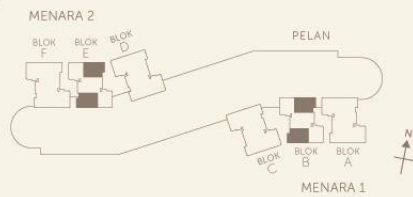
JENIS B2

1217 sqft



JENIS B2a

1217 sqft



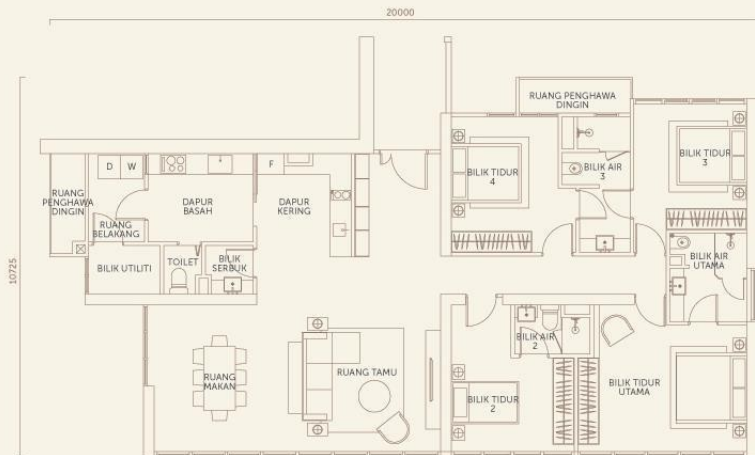
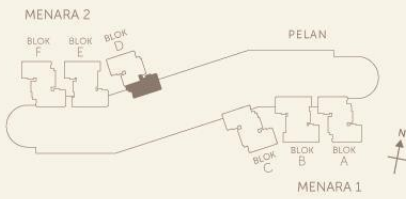
PELAN LANTAI

THE PEAK (PUNCAK TEBRAU)

MENARA 2

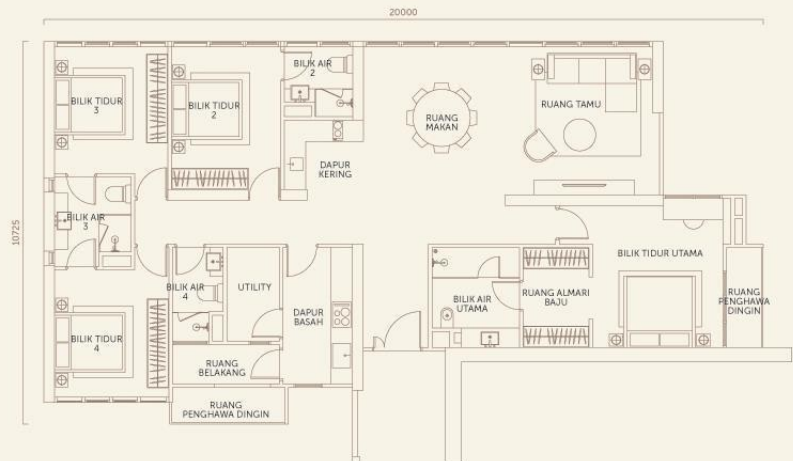
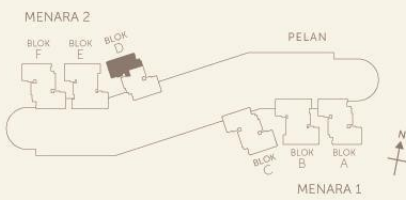
JENIS D1

1948 sqft



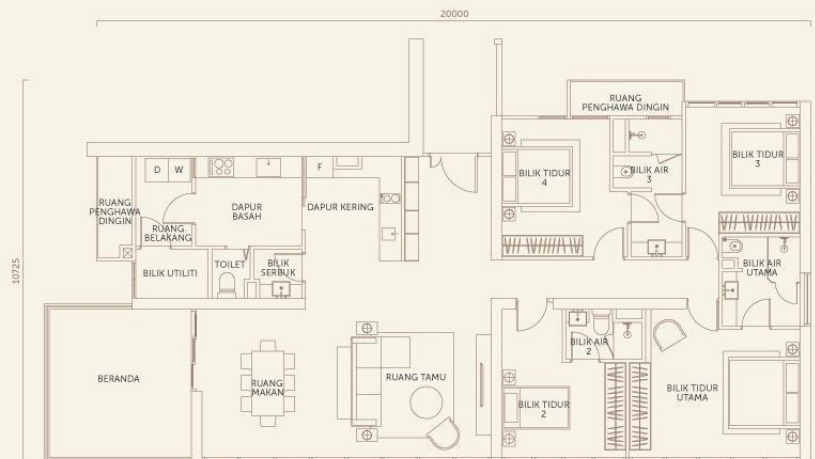
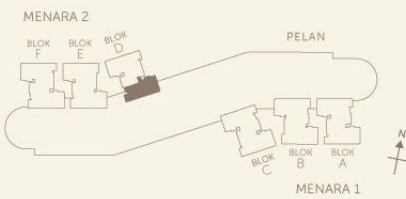
JENIS D4

1980 sqft



JENIS D5

2137 sqft



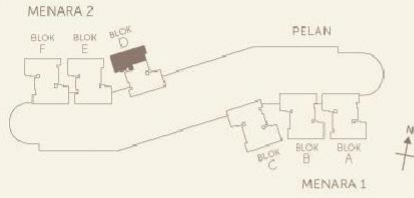
PELAN LANTAI

THE PEAK (PUNCAK TEBRAU)

MENARA 2

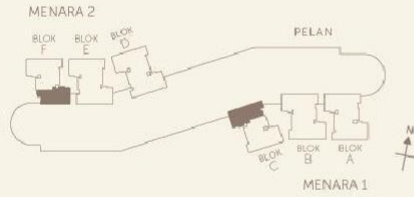
JENIS D8

2184 sqft



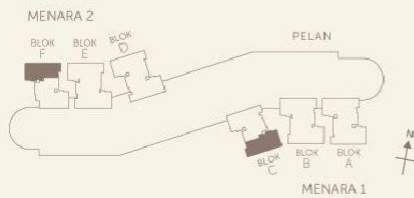
JENIS E

2192 sqft



JENIS E1

2200 sqft



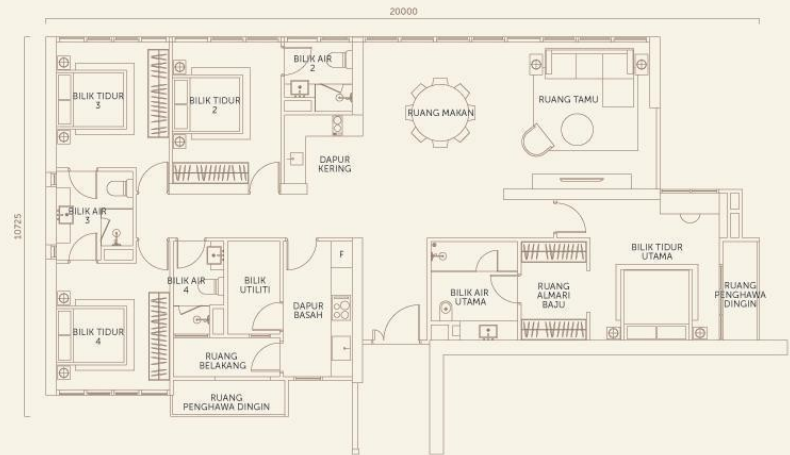
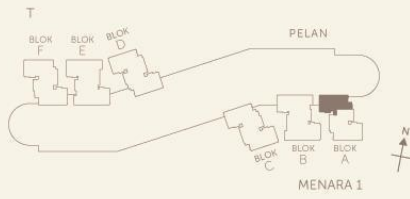
PELAN LANTAI

THE
PEAK
(PUNCAK TEBRAU)

MENARA 1

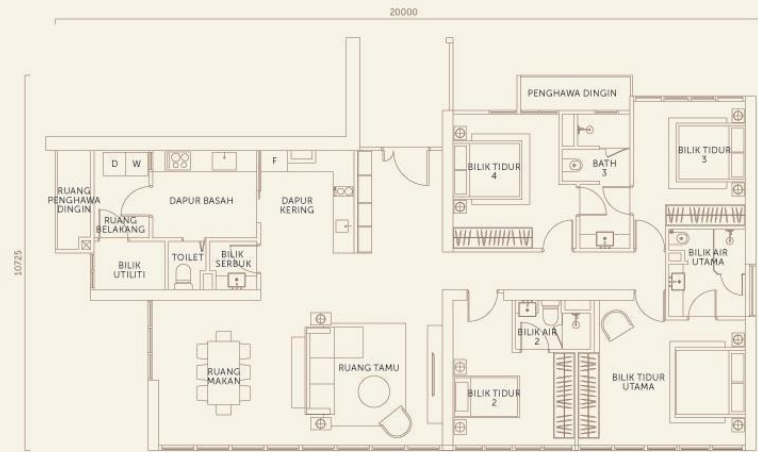
JENIS D2

1959 sqft



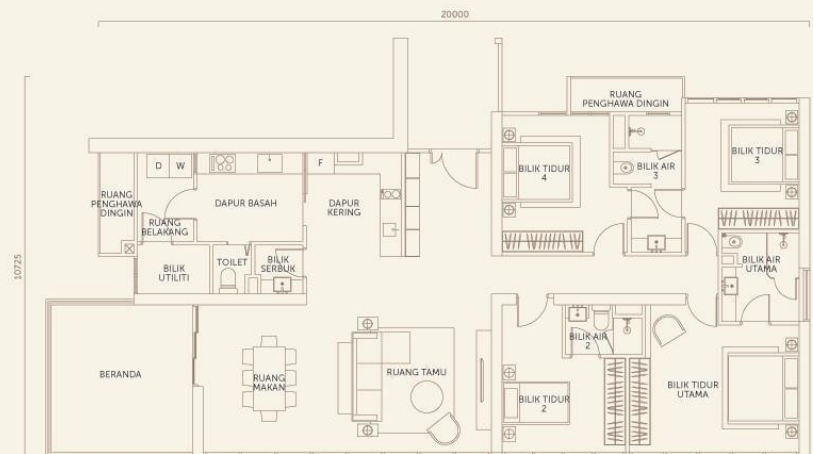
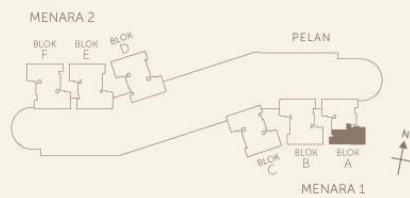
JENIS D3

1969 sqft



JENIS D6

2158 sqft



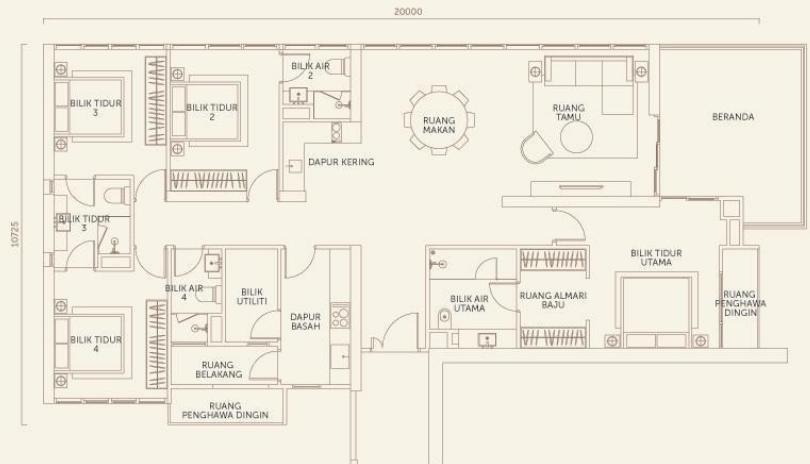
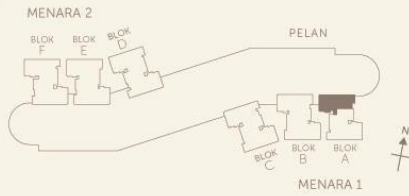
PELAN LANTAI

THE PEAK (PUNCAK TEBRAU)

MENARA 1

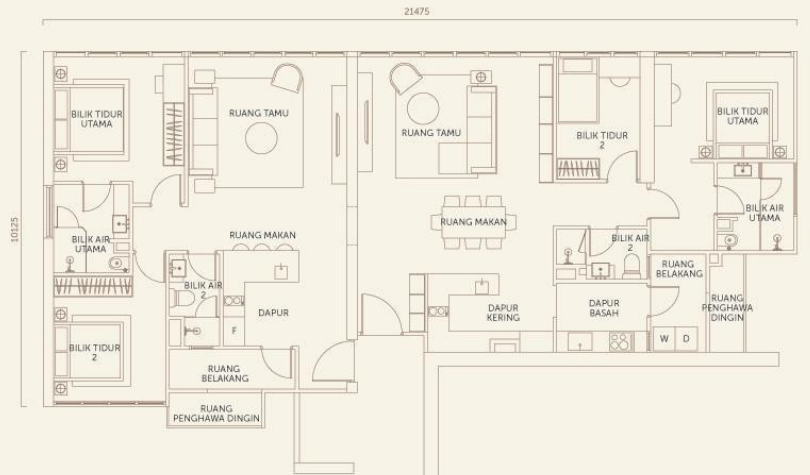
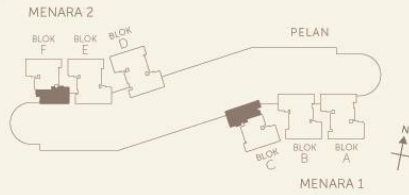
JENIS D7

2163 sqft



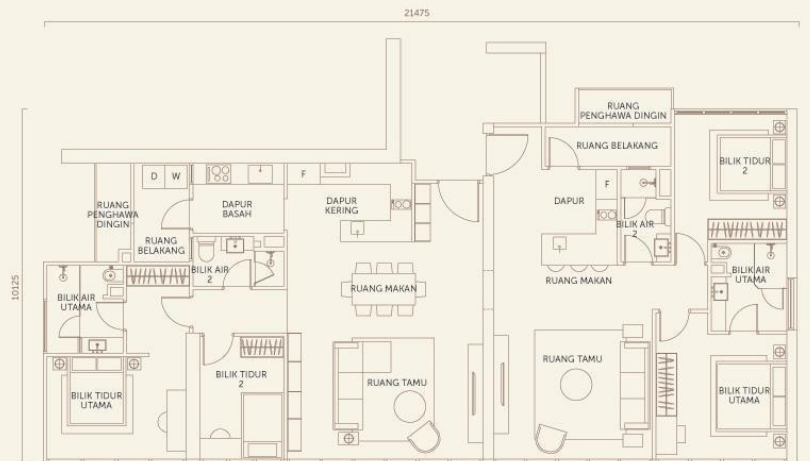
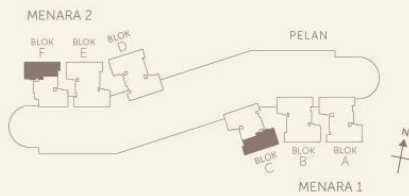
JENIS E

2192 sqft



JENIS E1

2200 sqft



SPEKIFIKASI

Struktur	Konkrit Bertetulang
Dinding	Dinding Bata / Konkrit Bertetulang / Kaca Dinding
Bumbung	Bumbung Konkrit Bertetulang
Siling	Papak Konkrit / Lepaan Skim / Papan Plaster Tahun
Kelembapan	
Tingkap	Tingkap Berbingkai Aluminium
Pintu	
- Pintu Masuk Utama	Pintu Tahan Kebakaran
- Bilik/ Bilik Mandi/ Bilik Dandan	Pintu Kayu
- Dapur Asian/ Halaman Belakang	Pintu Kayu Dan/ Atau Pintu Kaca Berbingkai Aluminium
- Tandas	Pintu Berlipat
- Patio Langit Persendirian/ Balconi	Pintu Kaca Berbingkai Aluminium
Lockset	Lockset Berkualiti
Kemasan Dinding	
- Bilik Mandi/ Bilik Dandan	Jubin Homogenus [sehingga bawah sillings gantung]
- Umum	Plaster/ Lepaan skim dan cat
- Tandas	Jubin seramik setinggi 2400mm
- Dapur	Jubin seramik setinggi 1800mm
Kemasan Lantai	
- Ruang Tamu/ Ruang Makan/ Dapur	Jubin Homogenus
- Semua Bilik Tidur (Jenis D1 ke D8)	Lantai Kayu Kejuruteraan
- Semua Bilik Tidur (Jenis E dan E1)	Lantai Kayu Kejuruteraan
- Bilik Tidur Utama (Jenis A, B1 & B2)	Lantai Kayu Kejuruteraan
- Bilik Tidur/ Bilik Belajar (Jenis A, B1 & B2)	Jubin Homogenus
- Patio Langit Persendirian/ Balconi	Jubin Homogenus
- Bilik Mandi/ Bilik Dandan	Jubin Homogenus
- Halaman Belakang/ Utiliti /Tandas	Jubin Seramik

SPEKIFIKASI

Lokasi	Sanitari	A	B1/B2	D2/D4/D7/D8	D1/D3/D5/D6	E/E1
Dapur	Sinki	1	2	2	2	3
Bilik Mandi	Mangkuk Tandas	2	2	4	3	4
	Besen	2	2	6	4	4
	Tap Mandi	1	1	1	1	2
	Set Mandi Pancuran	2	2	4	3	4
	Pemegang Tisu	2	2	4	3	4
	Rel Tuala	2	2	4	3	4
	Bidet Tangan	2	2	4	3	4
Bilik Dandan/ Tandas	Mangkuk Tandas	-	-	-	2	-
	Besen	-	-	-	2	-
	Set Mandi	-	-	-	1	-
	Pemegang Tisu	-	-	-	2	-
	Bidet Tangan	-	-	-	2	-
Halaman Belakang	Keran Air	1	1	1	1	2
Lokasi Lampu		13	15	25	24	29
Soket Elektrik		16	19	32	31	35
Soket TV		2	2	2	2	4
Soket Telefon		2	2	2	2	4
Soket Data		2	2	2	2	4
Loceng Pintu		1	1	1	1	2
Interkom		1	1	1	1	2
Lokasi Kipas Siling		3	5	7	7	7
Lokasi Lampu Dinding		-	-	3	2	-
Lokasi Pemanas Mandian		2	2	3	4	4
Lokasi Penyaman Udara		3	4	5	5	7



AQRS THE BUILDING COMPANY SDN. BHD 552540-x
(A wholly owned subsidiary of Gabungan AQRS Berhad)
G-58-G, Blok G, Jalan Teknologi 3/9, Bistari De' Kota, Kota Damansara,
PJU 5, 47810 Petaling Jaya, Selangor Darul Ehsan, Malaysia.
T +603 6141 8870 / +603 6141 8871 | E info@gbg.com.my | W www.gbg.com.my



Brosur

The Peak (Puncak Tebrau) Servis Residen * No Lesen Pemajuan Perumahan.: 9262/02-2028/0440(A) * Tempoh Sah: 22/02/2023 - 21/02/2028 * No Permit Iklan & Jualan.: _____ * Tempoh Sah: _____ * Kelulusan Pihak Berkuasa: Majlis Bandaraya Johor Bahru * No Kelulusan Pelan Bangunan.: MBBJ/U/2011/14/BGN/116 (52) * Jenis Pegangan Tanah: Bebas * Sekatan Kepentingan Tanah: Tiada * Bebanan(Gadaian) Tanah: Tiada * Tarikh Dijangka Siap: Januari 2027 * Jumlah Unit :668(baki unit belum dijual :453) * Harga Jualan: (Minima) RM 359,016 – (Maksima) RM 2,211,800 * Diskaun Bumiputra: 15%

*IKLAN INI TELAH DILULUSKAN OLEH JABATAN PERUMAHAN NEGARA. MAKLUMAT PEMAJUAN DAN IKLAN YANG DILULUSKAN BOLEH DISEMAK DI PORTAL TEDUH.KPKT.GOV.MY